



SOTTERO^{AND} MIDGLEY[®]
Spring 2022



Aerona 22SZ547

SOTTERO AND MIDGLEY®



personalize it!
FOR YOUR LOVE STORY



Aerona 22SZ547

COLORS

- Ivory gown with Ivory Illusion
- Ivory/Silver Accent over Pearl gown with Natural Illusion (pictured)
- Ivory/Silver Accent over Mocha gown with Natural illusion

HIGHLIGHTS

- Cluster sequined all over lace over sparkle tulle
- Sheer illusion bodice
- Square neckline
- Square back
- Illusion tank straps
- Covered buttons over zipper closure
- Exposed boning detailing

SIZES

0-28

personalize it!

PERSONALIZATION OPTIONS

- Extend the train for added drama (up to 36 in/91 cm), opt to shorten the train (up to 17 in/43 cm) or remove the train for a more casual look
- Add buttons down the back for a vintage vibe
- Also available with a fully lined bodice (22SZ547B01)

ACCESSORIES

- Detachable train sold separately (DT022SZ547000)
- Detachable beaded belt sold separately (BB022SZ547000)

MISCELLANEOUS

- Photographed with light nude bra cups, dark nude available separately



Anson 22SC559

SOTTERO AND MIDGLEY®

personalize it!
FOR YOUR LOVE STORY



A

SOTTERO-MIDGLEY
THIS GOWN IS MADE WITH LUXE
JERSEY LINING
Designed for a
comfortable fit that is
ultra-lightweight



Anson 22SC559

SOTTERO AND MIDGLEY

COLORS

- All Ivory gown with Ivory Illusion (pictured)
- Ivory gown with Natural Illusion (pictured)

HIGHLIGHTS

- Aldora crepe
- Sheer organza lined front bodice with beaded lace motifs
- Stylized deep V-neckline
- Soft illusion V-back with beaded lace motifs over Chantilly lace
- Illusion lace cap sleeves
- Lined with Virtue stretch jersey for comfort
- Covered buttons over zipper closure
- Chantilly lace accents side illusion cut outs

SIZES

0-28

personalize it!

PERSONALIZATION OPTIONS

- Extend the train for added drama (up to 8 in/20 cm), opt to shorten the train (up to 6 in/15 cm) or remove the train for a more casual look
- Add buttons down the back for a vintage vibe
- Available with a lined front bodice and side illusion cut outs (22SC559B01)

ACCESSORIES

- Detachable tulle train with scalloped lace edge (DT022SC559000)

MISCELLANEOUS

- Photographed with light nude bra cups, dark nude available separately



Brooklyn 22SK005

SOTTERO AND MIDGLEY®

personalize it!
FOR YOUR LOVE STORY



SOTTERO-MIDGLEY
THIS GOWN IS MADE WITH LUXE
JERSEY LINING
Designed for a
comfortable fit that is
ultra-lightweight



Brooklyn 22SK005

COLORS

- All Ivory gown with Ivory Illusion
- Ivory over Blush gown with Natural Illusion (pictured)
- Ivory over Mocha gown with Natural Illusion (pictured)

HIGHLIGHTS

- Lace motifs over sparkle tulle
- Lined in Aiko stretch jersey for comfort
- Plunging illusion V-neckline
- Covered buttons over zipper closure
- V-back
- Scallop illusion lace train
- Spaghetti straps accented with lace trim

SIZES

0-28

personalize it!

PERSONALIZATION OPTIONS

- Extend the train for added drama (up to 15 in/38 cm), opt to shorten the train (up to 15 in/38 cm) or remove the train for a more casual look
- Add buttons down the back for a vintage vibe
- Change sparkle tulle 1 to plain tulle
- Also available as illusion lace bateau neckline (22SK005B01)

MISCELLANEOUS

- Extra lace motif included for minor neckline alterations



Brynn 22SK007

SOTTERO AND MIDGLEY®



see the VIDEO!

personalize it!
FOR YOUR LOVE STORY



Brynn 22SK007

COLORS

- All Ivory gown with Ivory Illusion
- Ivory over Blush gown with Ivory Illusion (pictured)
- Ivory over Mocha gown with Ivory Illusion (pictured)

HIGHLIGHTS

- Beaded lace motifs over glitter tulle
- Illusion beaded lace tank straps
- Plunging squared illusion neckline edged with beaded scalloped lace trim
- Covered buttons over zipper closure
- Deep V-back
- Organza bows accent illusion neckline

SIZES

0-28

personalize it!

PERSONALIZATION OPTIONS

- Extend the train for added drama (up to 15 in/38 cm), opt to shorten the train (up to 10 in/25 cm) or remove the train for a more casual look
- Add buttons down the back for a vintage vibe
- Also available with raised neckline and no bows (22SK007B01)

ACCESSORIES

- Cathedral veil adorned in beaded lace motifs sold separately *Veil measures 120 inches (305 cm) (VL022SK007000)

MISCELLANEOUS

- Extra lace motif included for minor neckline alterations



Carson 22SC558
(BRAVA SLEEVES, 22MC574)

SOTTERO AND MIDGLEY®



see the
VIDEO!

personalize it!
FOR YOUR LOVE STORY



A

SOTTERO-MIDGLEY
THIS GOWN IS MADE WITH LUXE
JERSEY LINING
Designed for a
comfortable fit that is
ultra-lightweight



A



A

*SHOWN WITH BRAVA SLEEVES



A

Carson 22SC558

COLORS

- All Ivory gown with Ivory Illusion
- Ivory over Misty Mauve gown with Ivory Illusion (pictured)
- Ivory over Blush gown with Ivory Illusion
- Ivory over Mocha gown with Ivory Illusion

HIGHLIGHTS

- Vintage lace motifs over tulle and dot tulle
- Lined with Virtue stretch jersey for comfort
- Illusion tulle and lace bodice with corset detailing
- Covered buttons over zipper closure
- Strapless sweetheart neckline
- Thigh-high slit

SIZES

0-28

personalize it!

PERSONALIZATION OPTIONS

- Extend the train for added drama (up to 6 in/15 cm), opt to shorten the train (up to 10 in/25 cm) or remove the train for a more casual look
- Add buttons down the back for a vintage vibe
- Change dot tulle to plain tulle
- Available with a fully lined bodice with inner elastic (22SC558B01)

ACCESSORIES

- Detachable cap sleeves with lace and sequins sold separately (CS022SC558000)
- Two tier cathedral veil with scattered lace motifs sold separately (veil measures 120 in/305 cm) (VL022SC558000)

MISCELLANEOUS

- Photographed with dark nude bra cups, available separately

Brava 22MC574 (SLEEVES)

Detachable off-the-shoulder tulle bishop sleeves (DSA22MC574000)

- All Ivory sleeves with Ivory Illusion (pictured)
- Size 0-28

Detachable off-the-shoulder dot tulle bishop sleeves (DSB22MC574000)

- All Ivory sleeves with Ivory Illusion (pictured)
- Size 0-28

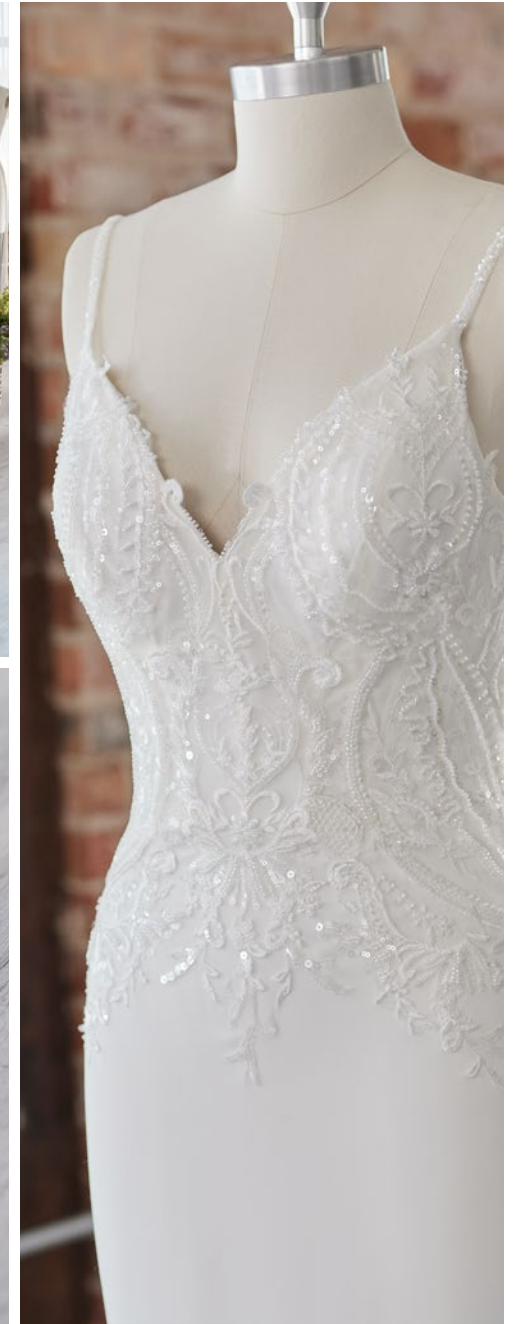


*SHOWN WITH BRAVA SLEEVES

Copeland 22SK567
(KADE BELT, 22MN014)

SOTTERO AND MIDGLEY®

personalize it!
FOR YOUR LOVE STORY



Copeland 22SK567

COLORS

- All Ivory (pictured)

HIGHLIGHTS

- Hecate satin
- Bodice embellished with beaded lace motifs
- V-neckline
- V-back
- Beaded spaghetti straps
- Lined in Aiko stretch jersey for comfort
- Zipper closure with covered buttons trailing down the train
- Illusion beaded lace scalloped train

SIZES

0-28

personalize it!

PERSONALIZATION OPTIONS

- Extend the train for added drama (up to 15 in/38 cm), opt to shorten the train (up to 15 in/38 cm) or remove the train for a more casual look

Kade 22MN014 (BELT)

- Photographed with a detachable metal belt sold separately (Kade, DB022MN013000)
- Gold (pictured)
- Small (fits sizes 0-14), Large (fits sizes 16-28)



Donovan 22SW533

SOTTERO AND MIDGLEY®

personalize it!
FOR YOUR LOVE STORY



SOTTERO-MIDGLEY
THIS GOWN IS MADE WITH LUXE
JERSEY LINING
Designed for a
comfortable fit that is
ultra-lightweight



Donovan 22SW533

SOTTERO AND MIDGLEY

COLORS

- All Ivory gown with Ivory Illusion
- Ivory over Misty Mauve gown with Natural Illusion (pictured)

HIGHLIGHTS

- All over lace
- Organza lined bust with lace trim detailing
- Illusion high mock turtle neck
- Illusion lace back
- Long illusion lace bishop sleeves with covered buttons at the wrist
- Lined with Virtue stretch jersey for comfort
- Covered buttons over zipper closure
- Workable front bodice buttons to the under bust
- Workable front buttons on the thigh high slit

SIZES

0-28

personalize it!

PERSONALIZATION OPTIONS

- Opt to shorten the train (up to 10 in/25 cm) or remove the train for a more casual look
- Add buttons down the back for a vintage vibe



Essex 22SK006

SOTTERO AND MIDGLEY®

personalize it!
FOR YOUR LOVE STORY



A



A



A

Essex 22SK006

SOTTERO AND MIDGLEY

COLORS

- Ivory gown with Ivory Illusion
- Ivory over Blush gown with Ivory Illusion
- Ivory over Mocha gown with Natural Illusion (pictured)

HIGHLIGHTS

- Beaded lace motifs over glitter Aurora tulle
- Beaded lace motifs over illusion tulle accented with beaded detailing
- Plunging illusion V-neckline
- Illusion V-back
- Illusion tank straps accented with beaded detailing
- Covered buttons over zipper closure
- Horsehair hem finish

SIZES

0-28

personalize it!

PERSONALIZATION OPTIONS

- Extend the train for added drama (up to 10 in/25 cm), opt to shorten the train (up to 10 in/25 cm) or remove the train for a more casual look
- Add buttons down the back for a vintage vibe
- Also available with lined front bodice (22SK006B01)

ACCESSORIES

- Detachable illusion beaded lace long sleeves sold separately (DS022SK006000)
- Fingertip veil adorned in beaded detailing sold separately *Veil measures 46 inches (117 cm) (VLA22SK006000)
- Chapel length tulle veil edged in beaded detailing *Veil measures 108 inches (274 cm) (VLB22SK006000)

MISCELLANEOUS

- Extra lace motif included for minor neckline alterations



Gibson 22SW013
(STACEY SKIRT, 22SC012)

SOTTERO AND MIDGLEY®



see the
VIDEO!



Gibson 22SW013

COLORS

- All Diamond White (pictured)

HIGHLIGHTS

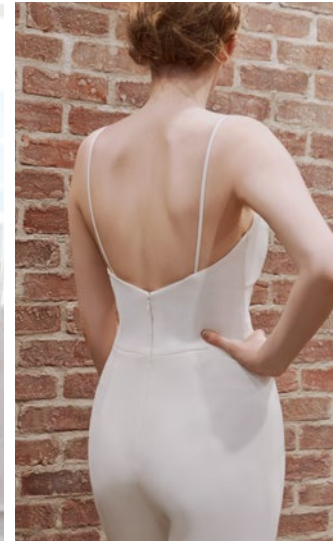
- Lindo crepe jumpsuit
- Soft scoop neckline
- Lindo crepe spaghetti straps
- Lined with Zia stretch satin
- Zipper closure

SIZES

0-28

ACCESSORIES

- Detachable sparkle tulle ballgown overskirt with grosgrain ribbon waist finish sold separately (OSA22SW013000)
 - PERSONALIZATION OPTION: Extend the train for added drama (up to 6 in/15 cm), opt to shorten the train (up to 8 in/20 cm)
- Detachable tulle ballgown overskirt with grosgrain ribbon waist finish sold separately (OSB22SW013000)
 - PERSONALIZATION OPTION: Extend the train for added drama (up to 6 in/15 cm), opt to shorten the train (up to 8 in/20 cm)



Stacey 22SC012 (SKIRT)

- Detachable tulle overskirt with lace motifs sold separately (Stacey, OS022SC012000)
- All Diamond White (pictured)
- 0-28
- PERSONALIZATION OPTION: Extend the train for added drama (up to 6 in/15 cm), opt to shorten the train (up to 8 in/20 cm) or remove the train for a more casual look



*SHOWN WITH STACEY SKIRT.

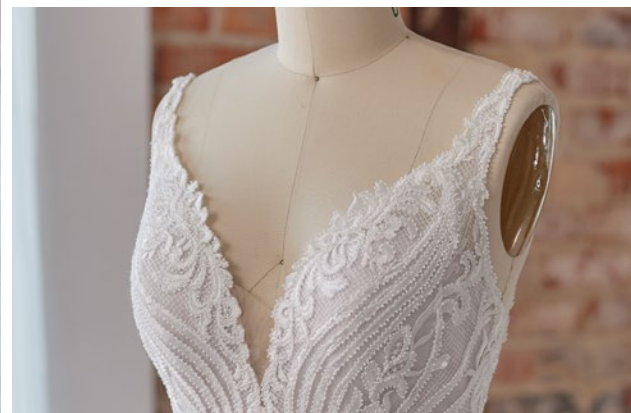
Harper 22SS576

SOTTERO AND MIDGLEY®

personalize it!
FOR YOUR LOVE STORY



SOTTERO-MIDGLEY
THIS GOWN IS MADE WITH LUXE
JERSEY LINING
Designed for a comfortable fit that is ultra-lightweight



Harper 22SS576

SOTTERO AND MIDGLEY

COLORS

- Ivory gown with Ivory Illusion
- Ivory over Misty Mauve gown with Natural Illusion (pictured)
- Ivory over Blush gown with Natural Illusion
- Ivory over Mocha gown with Natural Illusion

HIGHLIGHTS

- Beaded embroidery over tulle
- Plunging illusion V-neckline with crisscross tulle finish
- Illusion lace tank straps
- Lined with Virtue stretch jersey for comfort
- Covered buttons over zipper closure with inner elastic
- Scalloped illusion lace train

SIZES

0–28

personalize it!

PERSONALIZATION OPTIONS

- Extend the train for added drama (up to 18 in/45 cm), opt to shorten the train (up to 14 in/35 cm) or remove the train for a more casual look
- Add buttons down the back for a vintage vibe
- Change sparkle tulle 1 to plain tulle

ACCESSORIES

- Detachable sparkle tulle and organza train accented with lace sold separately (DTA22SS576000)
 - PERSONALIZATION OPTION: Extend the train for added drama (up to 12 in/30 cm), opt to shorten the train (up to 58 in/147 cm)
- Detachable tulle and organza train accented with lace sold separately (DTB22SS576000)
 - PERSONALIZATION OPTION: Extend the train for added drama (up to 12 in/30 cm), opt to shorten the train (up to 58 in/147 cm)



Kiernan 22SC581

SOTTERO AND MIDGLEY®



personalize it!
FOR YOUR LOVE STORY



Kiernan 22SC581

SOTTERO AND MIDGLEY

COLORS

- All Ivory gown with Ivory Illusion
- Ivory gown with Natural Illusion (pictured)
- Ivory over Blush gown with Natural Illusion
- Ivory over Misty Mauve gown with Natural Illusion (pictured)

HIGHLIGHTS

- Lace motifs over sequin Chantilly lace
- Plunging illusion sweetheart neckline
- Sheer organza lined bodice with lace motifs accented with sequins
- Illusion lace square back
- Illusion lace cap sleeves
- Covered buttons over zipper closure

SIZES

0-28

personalize it!

PERSONALIZATION OPTIONS

- Extend the train for added drama (up to 12 in/30 cm), opt to shorten the train (up to 20 in/51 cm) or remove the train for a more casual look
- Add buttons down the back for a vintage vibe

ACCESSORIES

- Detachable illusion lace long sleeves sold separately (DS022SC581000)
- Cathedral tulle veil edged with lace motifs sold separately *Veil measures 141 inch (358 cm) (VL022SC581000)

MISCELLANEOUS

- Photographed with dark nude bra cups, available separately



Lupita 22SW515
(KADE BELT, 22MN014)

SOTTERO AND MIDGLEY®



personalize it!
FOR YOUR LOVE STORY



*SHOWN WITH KADE BELT

Lupita 22SW515

COLORS

- All Ivory gown with Ivory Illusion (pictured)

HIGHLIGHTS

- Fallow organza over Devine stretch crepe
- Illusion high neck mock turtle neck over sweetheart base
- Sheer back bodice
- Fallow organza bishop sleeves with Devine stretch crepe cuff
- Lined with Zia stretch satin
- Zipper closure with covered buttons trailing down the train
- Organza bow detail at neck

SIZES

0–28

personalize it!

PERSONALIZATION OPTIONS

- Extend the train for added drama (up to 8 in/20 cm), opt to shorten the train (up to 8 in/20 cm) or remove the train for a more casual look

ACCESSORIES

- Bodice also available as an illusion Fallow organza jacket with long bishop sleeves sold separately (Lupita, JKA22SW515000)

Kade 22MN014 (BELT)

- Photographed with a detachable metal belt sold separately (Kade, DB022MN013000)
- Gold (pictured)
- Small (fits sizes 0–14), Large (fits sizes 16–28)



Mischa 22ST549

SOTTERO AND MIDGLEY®



see the VIDEO!

personalize it!
FOR YOUR LOVE STORY



Mischa 22ST549

SOTTERO AND MIDGLEY

COLORS

- All Ivory gown with Ivory Illusion
- Ivory over Nude gown with Natural Illusion (pictured)

HIGHLIGHTS

- Lace motifs over texture glitter tulle
- Sheer organza lined bodice
- Straight neckline with deep illusion
- V-neckline
- Lined with Chic organza
- Covered buttons over zipper closure

SIZES

0-28

personalize it!

PERSONALIZATION OPTIONS

- Extend the train for added drama (up to 20 in/51 cm), opt to shorten the train (up to 33 in/84 cm) or remove the train for a more casual look
- Add buttons down the back for a vintage vibe
- Available without horsehair detail in skirt
- Available fully lined

MISCELLANEOUS

- Extra lace motif included for minor neckline alterations
- Photographed with light nude bra cups, dark nude available separately



Montgomery 22SW545
(CARRINGTON CAPE, 22MK566)

SOTTERO AND MIDGLEY®



personalize it!
FOR YOUR LOVE STORY



*SHOWN WITH CARRINGTON CAPE



*SHOWN WITH CARRINGTON CAPE



*SHOWN WITH CARRINGTON CAPE

Montgomery 22SW545

SOTTERO AND MIDGLEY

COLORS

- Ivory gown with Natural Illusion
- Ivory over Soft Blush gown with Natural Illusion
- Ivory over Blush gown with Natural Illusion (pictured)

HIGHLIGHTS

- Lace motifs over sparkle tulle
- Plunging illusion sweetheart neckline
- Illusion side lace cutouts
- Covered buttons over zipper closure

SIZES

0-24

personalize it!

PERSONALIZATION OPTIONS

- Extend the train for added drama (up to 5 in/13 cm), opt to shorten the train (up to 10 in/25 cm) or remove the train for a more casual look
- Add buttons down the back for a vintage vibe
- Also available with raised front neckline with no illusion

ACCESSORIES

- Detachable off-the-shoulder tulle cap sleeves with lace sold separately (CS022SW545000)

MISCELLANEOUS

- Extra lace motif included for minor neckline alterations
- Photographed with light nude bra cups, dark nude available separately

Carrington 22MK566 (CAPE)

- Beaded lace floor length cape with scalloped lace hem sold separately (Carrington, CA022MK566000)
- All Ivory cape with Ivory Illusion (pictured)
- 0-28



*SHOWN WITH CARRINGTON CAPE



*SHOWN WITH CARRINGTON CAPE

Norvinia 22SZ009A
Norvinia Lynette 22SZ009B

SOTTERO AND MIDGLEY®



see the
VIDEO!

personalize it!
FOR YOUR LOVE STORY



Norvinia 22SZ009A

COLORS

- Ivory gown with Ivory Illusion
- Ivory over Nude gown with Natural Illusion (pictured)
- Black over Champagne gown with Natural Illusion (pictured)

HIGHLIGHTS

- Sequin lace motifs over sparkle tulle
- Scoop neckline
- Detachable beaded spaghetti straps included
- Covered buttons over zipper closure

SIZES

0-28

personalize it!

PERSONALIZATION OPTIONS

- Extend the train for added drama (up to 36 in/91 cm), opt to shorten the train (up to 31 in/79 cm) or remove the train for a more casual look
- Add buttons down the back for a vintage vibe



Norvinia Lynette 22SZ009B (NOT PHOTOGRAPHED)

COLORS

- Ivory gown with Ivory Illusion
- Ivory over Nude gown with Natural Illusion
- Black over Champagne gown with Black Illusion (pictured)

HIGHLIGHTS

- Sequin lace motifs over sparkle tulle
- Illusion lace bateau neckline
- Plunging illusion back
- Illusion lace fitted long sleeves
- Covered buttons over zipper closure

SIZES

0-28

personalize it!

PERSONALIZATION OPTIONS

- Extend the train for added drama (up to 36 in/91 cm), opt to shorten the train (up to 31 in/79 cm) or remove the train for a more casual look
- Add buttons down the back for a vintage vibe



Rashida 22SC556

SOTTERO AND MIDGLEY®



see the VIDEO!

personalize it!
FOR YOUR LOVE STORY



Rashida 22SC556

SOTTERO AND MIDGLEY

COLORS

- Ivory gown with Ivory Illusion
- Ivory over Nude gown with Natural Illusion (pictured)

HIGHLIGHTS

- Lace motifs over linear beaded and sequin fabric
- Sheer side cutouts
- Deep illusion V-neckline
- Plunging illusion scoop back neckline
- Illusion lace cap sleeves
- Lined with Virtue stretch jersey for comfort
- Crystal button over zipper closure
- Extended illusion scalloped lace train back neckline

SIZES

0-28

personalize it!

PERSONALIZATION OPTIONS

- Opt to shorten the train (up to 8 in/ 20 cm)
- Add buttons down the back for a vintage vibe



Richardson 22SN582
(KADE BELT, 22MN014)

SOTTERO AND MIDGLEY®



see the
VIDEO!

personalize it!
FOR YOUR LOVE STORY



SHOWN WITH KADE BELT

Richardson 22SN582

COLORS

- Antique Ivory gown with Natural Illusion (pictured)

HIGHLIGHTS

- Laser-cut faux leather lace
- Divine stretch crepe bodice
- Deep illusion V-neckline
- Deep V-back
- Tank straps
- Zipper closure
- Detachable faux leather belt included

SIZES

0-28

personalize it!

PERSONALIZATION OPTIONS

- Extend the train for added drama (up to 12 in/30 cm), opt to shorten the train (up to 28 in/71 cm) or remove the train for a more casual look

Kade 22MN014 (BELT)

- Photographed with a detachable metal belt sold separately (Kade, DB022MN013000)
- Gold (pictured)
- Small (fits sizes 0-14), Large (fits sizes 16-28)



SHOWN WITH KADE BELT

Ryker 22SS529

SOTTERO AND MIDGLEY®

personalize it!
FOR YOUR LOVE STORY



Ryker 22SS529

SOTTERO AND MIDGLEY

COLORS

- All Ivory gown with Ivory Illusion (pictured)
- Ivory over Blush gown with Natural Illusion (pictured)

HIGHLIGHTS

- Lace motifs over sparkle tulle accented with 3-D flowers at the hem
- Sheer Chantilly lace and organza lined bodice with lace motifs
- Soft sweetheart neckline
- Covered buttons over zipper closure

SIZES

0-28

personalize it!

PERSONALIZATION OPTIONS

- Extend the train for added drama (up to 12 in/30 cm), opt to shorten the train (up to 34 in/86 cm) or remove the train for a more casual look
- Add buttons down the back for a vintage vibe
- Available without 3-D flowers on the hem
- Available with a fully lined bodice with inner elastic

ACCESSORIES

- Detachable fitted long illusion lace sleeves sold separately (DSA22SS529000)
- Detachable illusion lace bell sleeves with 3-D flowers sold separately (DSB22SS529000)
- Detachable illusion lace cap sleeves sold separately (CS022SS529000)

MISCELLANEOUS

- Photographed with light nude bra cups, dark nude available separately



Shasta 22SC572

SOTTERO AND MIDGLEY®



see the
VIDEO!

personalize it!
FOR YOUR LOVE STORY



SOTTERO-MIDGLEY
THIS GOWN FEATURES AN
**INNER LACE-UP
CORSET**

*This hidden lace-up
creates a slenderizing fit*



Shasta 22SC572

SOTTERO AND MIDGLEY

COLORS

- All Diamond White gown with Diamond White Illusion
- All Ivory gown with Ivory Illusion
- Antique Ivory gown with Natural Illusion
- Ivory over Blush gown with Ivory Illusion (pictured)
- Ivory over Mocha gown with Natural Illusion (pictured)

HIGHLIGHTS

- Beaded tulle over glitter tulle
- Illusion bodice with corset detailing accented with beaded lace motifs
- Strapless sweetheart neckline
- Detachable beaded tie straps that can be worn off-the-shoulder included
- Covered buttons over zipper closure

SIZES

0-28

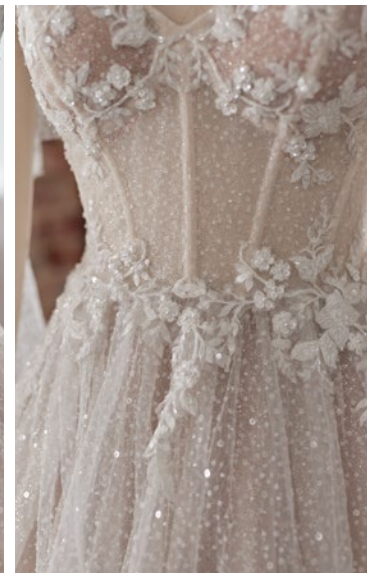
personalize it!

PERSONALIZATION OPTIONS

- Opt to shorten the train (up to 16 in/ 40cm) or remove the train for a more casual look
- Add buttons down the back for a vintage vibe
- Available with a fully lined bodice with inner corset

MISCELLANEOUS

- Photographed with light nude bra cups, dark nude available separately



Simone 22SC580A
Simone Lynette 22SC580C

SOTTERO AND MIDGLEY®



see the
VIDEO!

personalize it!
FOR YOUR LOVE STORY



P

Simone 22SC580A

COLORS

- Ivory gown with Natural Illusion
- Ivory over Blush gown with Natural Illusion (pictured)
- Ivory over Misty Mauve gown with Natural Illusion (pictured)

HIGHLIGHTS

- Beaded lace motifs over texture tulle
- Sheer bodice lined with organza
- Deep illusion sweetheart neckline
- Illusion lace back
- Beaded off-the-shoulder illusion lace straps
- Covered buttons over zipper closure
- Elastic off-the-shoulder sleeves for movability
- Horsehair hem finish

SIZES

0–28

personalize it!

PERSONALIZATION OPTIONS

- Opt to shorten the train (up to 10 in/25 cm) or remove the train for a more casual look
- Add buttons down the back for a vintage vibe
- Change Chantilly lace to plain tulle
- Change texture tulle 1 to plain tulle and Chantilly lace to Chic organza
- Also available with a lined front bodice

MISCELLANEOUS

- Extra lace motif included for minor neckline alterations
- Photographed with light nude bra cups, dark nude available separately

SISTER STYLES

- Also available with a lined front bodice and a raised front neckline (Simone, 22SC580B01)

Simone Lynette 22SC580C

(NOT PHOTOGRAPHED)

COLORS

- Ivory gown with Natural Illusion
- Ivory over Blush gown with Natural Illusion
- Ivory over Misty Mauve gown with Natural Illusion

HIGHLIGHTS

- Beaded lace motifs over texture tulle
- Lined lace front bodice
- Off-the-shoulder sweetheart neckline
- Illusion lace back
- Beaded off-the-shoulder illusion lace straps
- Covered buttons over zipper closure
- Elastic off-the-shoulder sleeves for movability
- Horsehair hem finish

SIZES

0–28

personalize it!

PERSONALIZATION OPTIONS

- Opt to shorten the train (up to 10 in/25 cm) or remove the train for a more casual look
- Add buttons down the back for a vintage vibe
- Change Chantilly lace to plain tulle
- Change texture tulle 1 to plain tulle and Chantilly lace to Chic organza

SOTTERO AND MIDGLEY



Vance 22SK509

SOTTERO AND MIDGLEY®

personalize it!
FOR YOUR LOVE STORY



Vance 22SK509

SOTTERO ^{AND} MIDGLEY

COLORS

- All Ivory gown with Ivory Illusion (pictured)
- Ivory over Whisper Blush gown with Natural Illusion (pictured)

HIGHLIGHTS

- Sequined and beaded allover lace
- Covered buttons over zipper closure
- Sheer organza lined bodice
- Beaded belt attached
- V-neckline
- Horsehair hem finish
- Beaded spaghetti straps

SIZES

0-28

personalize it!

PERSONALIZATION OPTIONS

- Extend the train for added drama (up to 15 in/38 cm), opt to shorten the train (up to 15 in/38 cm) or remove the train for a more casual look
- Add buttons down the back for a vintage vibe

MISCELLANEOUS

- Photographed with dark nude bra cups, available separately



Weston 22SW578

SOTTERO AND MIDGLEY®



Weston 22SW578

SOTTERO ^{AND} MIDGLEY

COLORS

- All Ivory gown with Ivory Illusion (pictured)

HIGHLIGHTS

- Lace motifs over Devine stretch crepe
- Strapless sweetheart neckline
- Lined with Virtue stretch jersey for comfort
- Zipper with inner elastic closure with covered buttons trailing down the train
- Extended scalloped illusion lace train

SIZES

0-28



Zulima 22SV561

SOTTERO AND MIDGLEY®



see the VIDEO!

personalize it!
FOR YOUR LOVE STORY



Zulima 22SV561

SOTTERO AND MIDGLEY

COLORS

- Ivory/Silver Accent gown with Natural Illusion (pictured)

HIGHLIGHTS

- Glamour satin-taffeta
- Illusion 3D lace bodice
- Sweetheart neckline
- Off-the-shoulder wrap sleeves
- Covered buttons over zipper closure
- Pockets

SIZES

0-28

personalize it!

PERSONALIZATION OPTIONS

- Extend the train for added drama (up to 12 in/30 cm), opt to shorten the train (up to 20 in/50 cm) or remove the train for a more casual look
- Add buttons down the back for a vintage vibe

MISCELLANEOUS

- Photographed with light nude bra cups, dark nude available separately





Bracken 20SS655A11

Modified lace train
(new personalization available)



Bracken Lynette 20SS655B11

Modified lace train
(new personalization available)



Kitara Lynette 21SW863B01

Raised back neckline



Zartasha Leigh 21SV864B01

Modest

