



MAGGIE SOTTERO®
Spring 2022



Albany 22MK508

MAGGIE SOTTERO®

 see the VIDEO!

personalize it!
FOR YOUR LOVE STORY 



Albany 22MK508

MAGGIE SOTTERO

COLORS

- All Ivory gown with Ivory Illusion (pictured)
- Ivory over Pearl gown with Ivory Illusion
- Ivory over Blush gown with Natural Illusion
- Ivory over Mocha gown with Natural Illusion (pictured)

HIGHLIGHTS

- Sequined lace motifs over beaded tulle
- Sheer lace bodice accented with double beaded trim on waist
- Square neckline
- Deep V-back
- Illusion lace tank straps
- Covered buttons over zipper closure
- Double scalloped lace illusion train

SIZES

0-28

personalize it!

PERSONALIZATION OPTIONS

- Extend the train for added drama (up to 10 in/25 cm), or remove the train for a more casual look
- Add buttons down the back for a vintage vibe
- Change beaded tulle to sparkle tulle 1
- Change beaded tulle to plain tulle
- Also available with a lined sweetheart bodice (22MK508B01)

ACCESSORIES

- Detachable train with beaded tulle sold separately (DTA22MK508000)
- Detachable train with sparkle tulle sold separately (DTB22MK508000)
- Detachable train with plain tulle sold separately (DTC22MK508000)

MISCELLANEOUS

- Photographed with light nude bra cups, dark nude available separately



Alessandra 22MK542

MAGGIE SOTTERO®



personalize it!
FOR YOUR LOVE STORY



Alessandra 22MK542

MAGGIE SOTTERO®

COLORS

- All Ivory gown with Ivory Illusion
- Ivory over Almond gown with Ivory Illusion
- Ivory over Blush gown with Natural Illusion (pictured)
- Ivory over Nude gown with Natural Illusion (pictured)

HIGHLIGHTS

- Allover lace
- Sweetheart neckline
- Sheer bodice lined with tulle
- Covered buttons over zipper closure

SIZES

0-28

personalize it!

PERSONALIZATION OPTIONS

- Extend the train for added drama (up to 10 in/25 cm), opt to shorten the train (up to 30 in/76 cm) or remove the train for a more casual look
- Add buttons down the back for a vintage vibe
- Available with a fully lined bodice with inner elastic closure (22MK542B01)

ACCESSORIES

- Detachable cap sleeves sold separately (CS021RK828000, Dallas)

MISCELLANEOUS

- Photographed with dark nude bra cups, available separately

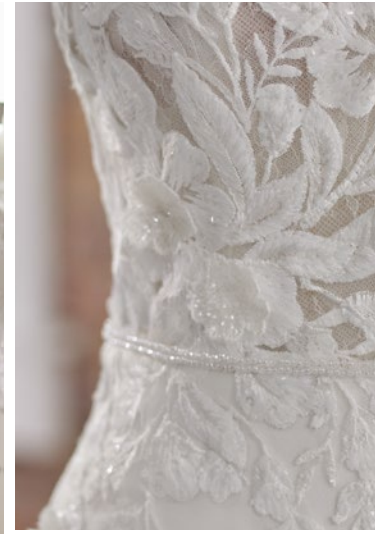


*SHOWN WITH DALLAS CAP SLEEVES

Baxley 22MW548

MAGGIE SOTTERO®

personalize it!
FOR YOUR LOVE STORY



Baxley 22MW548

MAGGIE SOTTERO®

COLORS

- All Ivory gown with Ivory Illusion (pictured)
- Ivory gown with Natural Illusion

HIGHLIGHTS

- Lace motifs over Talin stretch crepe
- Sheer organza lined lace bodice
- V-neckline
- Plunging illusion V-back
- Beaded spaghetti straps
- Lined with Donella crepe
- Zipper closure with covered buttons trailing down the train
- Scalloped lace cutout train

SIZES

0-28

personalize it!

PERSONALIZATION OPTIONS

- Extend the train for added drama (up to 10 in/25 cm), opt to shorten the train (up to 21 in/53 cm) or remove the train for a more casual look
- Available with a lined front bodice (22MW548B01)

MISCELLANEOUS

- Photographed with light nude bra cups, dark nude available separately



Beckett 22MT536

MAGGIE SOTTERO®



see the
VIDEO!

personalize it!
FOR YOUR LOVE STORY



Beckett 22MT536

MAGGIE SOTTERO®

COLORS

- All Ivory gown with Ivory Illusion
- Ivory/Champagne Accent gown with Natural Illusion (pictured)

HIGHLIGHTS

- Lace motifs with sequins over tulle
- Sheer organza lined bodice with ruffled tulle and lace motifs
- Deep V-neckline
- Covered buttons over zipper closure
- Ruffle patterned tulle skirt with horsehair hem finish

SIZES

0-28

personalize it!

PERSONALIZATION OPTIONS

- Extend the train for added drama (up to 10 in/ 25cm), opt to shorten the train (up to 35in/89 cm) or remove the train for a more casual look
- Available with a fully lined bodice (22MT536B01)

MISCELLANEOUS

- Extra lace motif included for minor neckline alterations
- Photographed with light nude bra cups, dark nude available separately



Canberra 22MK003

MAGGIE SOTTERO®

personalize it!
FOR YOUR LOVE STORY



Canberra 22MK003

MAGGIE SOTTERO

COLORS

- All Ivory gown with Ivory Illusion
- Ivory over Pearl gown with Natural Illusion (pictured)
- Ivory over Nude gown with Natural Illusion

HIGHLIGHTS

- Beaded lace motifs over tulle
- Illusion lace tank straps
- V-neckline
- Covered buttons over zipper closure
- Deep illusion V-back
- Extended illusion lace train

SIZES

0-28

personalize it!

PERSONALIZATION OPTIONS

- Extend the train for added drama (up to 15 in/38 cm), opt to shorten the train (up to 10 in/25 cm) or remove the train for a more casual look
- Add buttons down the back for a vintage vibe

MISCELLANEOUS

- Photographed with light nude bra cups, dark nude available separately



Chantal 22MC553

MAGGIE SOTTERO®

personalize it!
FOR YOUR LOVE STORY



Chantal 22MC553

MAGGIE SOTTERO®

COLORS

- Ivory gown with Natural Illusion (pictured)

HIGHLIGHTS

- Revina chiffon
- Sheer organza and glitter tulle lined lace bodice
- Plunging illusion strapless sweetheart neckline
- Covered buttons over zipper closure
- Thigh-high slit

SIZES

0-28

personalize it!

PERSONALIZATION OPTIONS

- Extend the train for added drama (up to 5 in/12 cm), opt to shorten the train (up to 8 in/20 cm) or remove the train for a more casual look
- Add buttons down the back for a vintage vibe
- Available as a strapless lined bodice with an inner elastic closure (22MC553B01)

ACCESSORIES

- Detachable cap sleeves with lace and sequins sold separately (CS022MC553000)

MISCELLANEOUS

- Extra lace motif included for minor neckline alterations
- Photographed with light nude bra cups, dark nude available separately

SISTER STYLES

- Available as a V-neck with long fitted illusion lace sleeves with an illusion lace high back (Chantal Lynette, 22MC553A11)



Chantal Lynette 22MC553A11

MAGGIE SOTTERO®



see the
VIDEO!

personalize it!
FOR YOUR LOVE STORY



Chantal Lynette 22MC553A11

MAGGIE SOTTERO®

COLORS

- All Ivory gown with Ivory Illusion
- Ivory gown with Natural Illusion (pictured)

HIGHLIGHTS

- Revina chiffon
- Sheer organza and glitter tulle lined lace bodice
- Plunging V-neck
- Illusion lace back
- Long fitted illusion lace sleeves with covered buttons at the wrist
- Covered buttons over zipper closure
- Thigh-high slit

SIZES

0-28

personalize it!

PERSONALIZATION OPTIONS

- Extend the train for added drama (up to 5 in/12 cm), opt to shorten the train (up to 8 in/20 cm) or remove the train for a more casual look
- Add buttons down the back for a vintage vibe

MISCELLANEOUS

- Extra lace motif included for minor neckline alterations
- Photographed with light nude bra cups, dark nude available separately

SISTER STYLES

- Available as a strapless bodice (Chantal, 22MC553A01)



Diana 22MW506

MAGGIE SOTTERO®



personalize it!
FOR YOUR LOVE STORY



Diana 22MW506

MAGGIE SOTTERO

COLORS

- All Ivory gown with Ivory Illusion
- Ivory over Champagne gown with Natural Illusion (pictured)
- Ivory over Blush gown with Natural Illusion (pictured)

HIGHLIGHTS

- Lace motifs with sequins over sparkle tulle
- Sheer lace bodice over sweetheart organza lining
- Plunging illusion V-neckline
- Illusion back bodice
- Illusion lace cap sleeves
- Covered buttons over zipper closure

SIZES

0–28

personalize it!

PERSONALIZATION OPTIONS

- Extend the train for added drama (up to 15 in/38 cm), opt to shorten the train (up to 23 in/58 cm) or remove the train for a more casual look
- Add buttons down the back for a vintage vibe
- Change sparkle tulle 1 to texture tulle 1
- Change sparkle tulle 1 to plain tulle
- Also available with a lined front bodice (22MW506B01)

ACCESSORIES

- Detachable long illusion lace sleeves sold separately (DS022MW506000)

MISCELLANEOUS

- Extra lace motif included for minor neckline alterations
- Photographed with light nude bra cups, dark nude available separately



Elijah 22MN537

MAGGIE SOTTERO®



personalize it!
FOR YOUR LOVE STORY



Elijah 22MN537

MAGGIE SOTTERO®

COLORS

- Ivory gown with Natural Illusion (pictured)

HIGHLIGHTS

- Opulent stretch satin
- Halter scoop neckline
- Illusion lace racer back with bow
- Thin halter straps
- Lined with Virtue stretch jersey for comfort
- Zipper closure with covered buttons trailing down the train
- Illusion scalloped cut-out lace train

SIZES

0-28

personalize it!

PERSONALIZATION OPTIONS

- Extend the train for added drama (up to 18 in/46 cm), opt to shorten the train (up to 55 in/140 cm) or remove the train for a more casual look



Fern 22MS505

MAGGIE SOTTERO®



see the VIDEO!

personalize it!
FOR YOUR LOVE STORY



Fern 22MS505

MAGGIE SOTTERO®

COLORS

- All Ivory gown with Ivory Illusion
- Ivory over Blush gown with Natural Illusion (pictured)
- Ivory over Nude gown with Natural Illusion
- Ivory over Mocha gown with Natural Illusion

HIGHLIGHTS

- Beaded lace motifs over sparkle tulle
- Sheer lace bodice over sweetheart organza lining
- Plunging illusion V-neckline
- Soft V-back
- Illusion lace tank straps
- Covered buttons over zipper closure

SIZES

0-28

personalize it!

PERSONALIZATION OPTIONS

- Extend the train for added drama (up to 12 in/30 cm), opt to shorten the train (up to 18 in/45 cm) or remove the train for a more casual look
- Change 2nd layer of plain tulle to sparkle tulle 1
- Change 2nd layer of sparkle tulle 1 to glitter tulle 3
- Also available with a lined sweetheart bodice (22MS505B01)

ACCESSORIES

- Detachable long illusion lace sleeves sold separately (DS022MS505000)

MISCELLANEOUS

- Extra lace motif included for minor neckline alterations
- Photographed with light nude bra cups, dark nude available separately

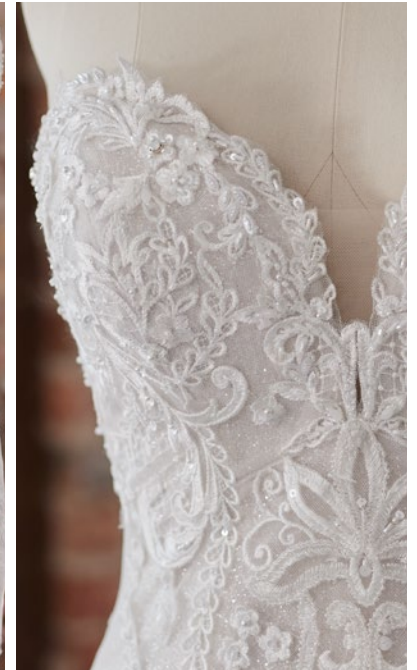


Frederique 22MC516

MAGGIE SOTTERO®



personalize it!
FOR YOUR LOVE STORY



Frederique 22MC516

MAGGIE SOTTERO®

COLORS

- Ivory gown with Natural Illusion
- Ivory over Misty Mauve gown with Natural Illusion (pictured)
- Ivory over Mocha gown with Natural Illusion

HIGHLIGHTS

- Beaded lace motifs over glitter tulle
- Deep illusion strapless sweetheart neckline
- Covered buttons over zipper closure
- Horsehair hem finish

SIZES

0-28

personalize it!

PERSONALIZATION OPTIONS

- Extend the train for added drama (up to 15 in/38 cm), opt to shorten the train (up to 20 in/51 cm) or remove the train for a more casual look
- Add buttons down the back for a vintage vibe
- Change glitter tulle to Chantilly lace 2 with sequin
- Change glitter tulle to texture tulle 1

ACCESSORIES

- Detachable off-the-shoulder beaded lace cap sleeves sold separately (CS022MC516000)
- Detachable scalloped lace train extension sold separately (TE022MC516000)

MISCELLANEOUS

- Extra lace motif included for minor neckline alterations



Gina 22MC551
(SIGOURNEY CAPE, 22MS523)

MAGGIE SOTTERO®



see the
VIDEO!

personalize it!
FOR YOUR LOVE STORY



Gina 22MC551

MAGGIE SOTTERO

COLORS

- All Diamond White (pictured)

HIGHLIGHTS

- Allover beaded tulle over glitter tulle
- Deep V-neckline
- Beaded spaghetti straps
- Lined with Virtue stretch jersey for comfort
- Zipper closure with covered buttons trailing down the train

SIZES

0-28

personalize it!

PERSONALIZATION OPTIONS

- Extend the train for added drama (up to 8 in/20 cm), opt to shorten the train (up to 6 in/15 cm) or remove the train for a more casual look

ACCESSORIES

- Chapel length tulle veil edged with beaded trim sold separately *Veil measures 108 inches (274 cm) (VL022MC551000)

Sigourney 22MS523 (CAPE)

- Detachable beaded flutter sleeve cape sold separately (Sigourney, CA022MS523000)
- Ivory cape with Ivory Illusion (pictured)
- Size 0-28



SHOWN WITH SIGOURNEY CAPE

Greer 22MC562

MAGGIE SOTTERO®

personalize it!
FOR YOUR LOVE STORY



COLORS

- Ivory (pictured)

HIGHLIGHTS

- Felicity Mikado over all over lace and glitter texture tulle
- Scoop neckline
- Soft V-back
- Felicity Mikado spaghetti straps
- Lined with Virtue stretch jersey for comfort
- Covered buttons over zipper closure
- Beaded belt at cut seam attached
- Skirt accented with 3-D lace flowers
- Illusion lace train

SIZES

0-28

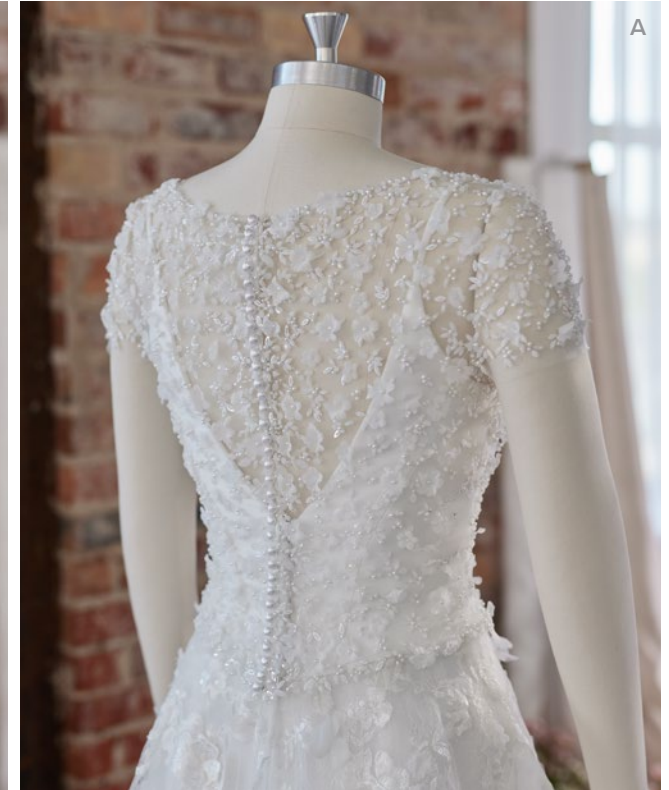
personalize it!

PERSONALIZATION OPTIONS

- Extend the train for added drama (up to 3 in/7 cm), opt to shorten the train (up to 30 in/76 cm) or remove the train for a more casual look
- Add buttons down the back for a vintage vibe
- Change texture tulle 1 to sparkle tulle 1
- Change texture tulle 1 to Chic organza

ACCESSORIES

- Detachable jacket with beading and 3-D flowers sold separately (JK022MC562000)



Harlem 22MT513

MAGGIE SOTTERO®



see the VIDEO!

personalize it!
FOR YOUR LOVE STORY



Harlem 22MT513

MAGGIE SOTTERO®

COLORS

- All Diamond White gown with Diamond White Illusion (pictured)
- All Ivory gown with Ivory Illusion
- Ivory over Misty Mauve gown with Natural Illusion
- Ivory over Blush gown with Natural Illusion (pictured)

HIGHLIGHTS

- Lace motifs with sequins over tulle
- Sheer lace bodice lined with organza
- Off-the-shoulder sweetheart neckline
- Soft V-back
- Off-the-shoulder illusion lace cap sleeves
- Covered buttons over zipper closure
- Elastic off-the-shoulder sleeves for movability

SIZES

0-28

personalize it!

PERSONALIZATION OPTIONS

- Extend the train for added drama (up to 25 in/63 cm), opt to shorten the train (up to 30 in/76 cm) or remove the train for a more casual look
- Add buttons down the back for a vintage vibe
- Change 2nd tulle layer to sparkle tulle 1
- Available with a fully lined bodice (22MT513B01)

MISCELLANEOUS

- Photographed with light nude bra cups, dark nude available separately



Hayes 22MK001

MAGGIE SOTTERO®



see the VIDEO!

personalize it!
FOR YOUR LOVE STORY



Hayes 22MK001

MAGGIE SOTTERO®

COLORS

- All Ivory gown with Ivory Illusion
- Ivory gown with Natural Illusion (pictured)

HIGHLIGHTS

- Sherwood crepe
- Square neckline
- Plunging illusion back with beaded embroidery
- Beaded embroidery long sleeves with bell cuff
- Lined in Vlada stretch jersey for comfort
- Zipper closure with covered buttons trailing down the train

SIZES

0-28

personalize it!

PERSONALIZATION OPTIONS

- Extend the train for added drama (up to 15 in/38 cm), opt to shorten the train (up to 15 in/38 cm) or remove the train for a more casual look
- Also available with beaded illusion cap sleeves (22MK001B01)

ACCESSORIES

- Detachable embroidery train extension sold separately (TE022MK001000)



Ivy 22MC563

MAGGIE SOTTERO®

 see the VIDEO!

personalize it!
FOR YOUR LOVE STORY 



Ivy 22MC563

MAGGIE SOTTERO

COLORS

- All Ivory
- Ivory over Misty Mauve
- Ivory over Blush
- Ivory over Mocha (pictured)

HIGHLIGHTS

- Beaded lace motifs over Chantilly lace
- Sweetheart neckline
- Covered buttons over zipper closure

SIZES

0-28

personalize it!

PERSONALIZATION OPTIONS

- Opt to shorten the train (up to the 20 in/ 50cm) or remove the train for a more casual look
- Add buttons down the back for a vintage vibe
- Change Chantilly lace to Chic organza
- Change Chantilly lace to sparkle tulle 1

ACCESSORIES

- Beaded lace cap sleeves on ruched tulle sold separately (CS022MC563000)



Kenya 22MW579

MAGGIE SOTTERO®



see the
VIDEO!

personalize it!
FOR YOUR LOVE STORY



Kenya 22MW579

MAGGIE SOTTERO®

COLORS

- All Ivory (pictured)

HIGHLIGHTS

- Lux stretch crepe
- Modest batteau neckline
- Modest scoop back neckline
- Long bishop sleeves with covered buttons at the wrist
- Lined with Brisa stretch jersey for comfort
- Zipper closure with covered buttons trailing down the train

SIZES

0-28

personalize it!

PERSONALIZATION OPTIONS

- Extend the train for added drama (up to 8 in/20 cm), opt to shorten the train (up to 8 in/20 cm) or remove the train for a more casual look



Keris 22MW519

MAGGIE SOTTERO®

▶ see the VIDEO!

personalize it!
FOR YOUR LOVE STORY



Keris 22MW519

MAGGIE SOTTERO

COLORS

- Ivory gown with Natural Illusion
- Ivory over Blush gown with Natural Illusion
- Ivory over Misty Mauve gown with Natural Illusion (pictured)

HIGHLIGHTS

- Floral glitter tulle
- Ruched plain tulle over floral glitter tulle bodice
- V-neckline
- Deep V-back
- Beaded spaghetti straps
- Lined with Virtue Stretch jersey for comfort
- Covered buttons over zipper closure
- Illusion side insets

SIZES

0-28

personalize it!

PERSONALIZATION OPTIONS

- Opt to shorten the train (up to 8 in/20 cm) or remove the train for a more casual look
- Add buttons down the back for a vintage vibe



Lomara 22MC534

MAGGIE SOTTERO®



personalize it!
FOR YOUR LOVE STORY



Lomara 22MC534

MAGGIE SOTTERO®

COLORS

- All Ivory (pictured)

HIGHLIGHTS

- Opulent stretch satin
- Soft V-neckline
- Deep scoop back
- Spaghetti straps
- Lined with Brisa stretch jersey for comfort
- Zipper closure
- Spaghetti strap ties in back with corded tassel detail
- Illusion cut-out lace train with sequins and soutache detail

SIZES

0-28

personalize it!

PERSONALIZATION OPTIONS

- Extend the train for added drama (up to 12 in/30 cm), opt to shorten the train (up to 8 in/20 cm)



Lynwood 22MT560

MAGGIE SOTTERO®



see the VIDEO!

personalize it!
FOR YOUR LOVE STORY



Lynwood 22MT560

MAGGIE SOTTERO

COLORS

- All Ivory gown with Ivory Illusion
- Ivory over Blush gown with Natural Illusion (pictured)
- Ivory over Misty Mauve gown with Natural Illusion

HIGHLIGHTS

- All over lace
- Illusion all over lace bodice with exposed boning
- Scoop neckline
- Illusion lace tank strap
- Lined with Lorena stretch jersey for comfort
- Covered buttons over zipper closure
- Pearl trim along the waist line attached

SIZES

0-28

personalize it!

PERSONALIZATION OPTIONS

- Extend the train for added drama (up to 8 in/ 20 cm), opt to shorten the train (up to 27 in/ 68 cm) or remove the train for a more casual look
- Add buttons down the back for a vintage vibe
- Available with a fully lined bodice (22MT560B01)

MISCELLANEOUS

- Photographed with light nude bra cups, dark nude available separately



Mayuri 22MN004

MAGGIE SOTTERO®



personalize it!
FOR YOUR LOVE STORY



Mayuri 22MN004

MAGGIE SOTTERO

COLORS

- All Ivory gown with Ivory Illusion
- Ivory gown with Natural Illusion (pictured)

HIGHLIGHTS

- Rima stretch satin
- Sheer organza lined bodice accented with sequined lace
- Deep illusion V-neckline
- Illusion V-back
- Illusion lace tank straps
- Covered buttons over zipper closure
- Illusion lace cut-out scallop train

SIZES

0-28

personalize it!

PERSONALIZATION OPTIONS

- Extend the train for added drama (up to 24 in/61 cm), opt to shorten the train (up to 34 in/86 cm) or remove the train for a more casual look
- Add buttons down the back for a vintage vibe
- Also available with a front lined bodice (22MN004B01)

ACCESSORIES

- Detachable lace train sold separately (DT022MN004000)
 - PERSONALIZATION OPTION: Extend the train for added drama (up to 24 in/61 cm), opt to shorten the train (up to 34 in/86 cm) or remove the train for a more casual look

MISCELLANEOUS

- Extra lace motif included for minor neckline alterations
- Photographed with light nude bra cups, dark nude available separately



Mindel 22MT550

MAGGIE SOTTERO®

personalize it!
FOR YOUR LOVE STORY



Mindel 22MT550

MAGGIE SOTTERO®

COLORS

- All Ivory gown with Ivory Illusion
- Ivory over Misty Mauve gown with Natural Illusion (pictured)
- Ivory over Blush gown with Ivory Illusion (pictured)

HIGHLIGHTS

- Allover lace
- Sheer organza lined lace bodice
- Soft square neckline
- Illusion lace V-back
- Illusion lace tank straps
- Covered buttons over zipper closure
- Illusion side insets

SIZES

0-28

personalize it!

PERSONALIZATION OPTIONS

- Opt to shorten the train (up to 22 in/56 cm) or remove the train for a more casual look
- Add buttons down the back for a vintage vibe
- Change 2nd layer of plain tulle to sparkle tulle 1
- Available with a fully lined front bodice (22MT550B01)

MISCELLANEOUS

- Photographed with light nude bra cups, dark nude available separately



Monaco 22MW557

MAGGIE SOTTERO®



see the
VIDEO!

personalize it!
FOR YOUR LOVE STORY



Monaco 22MW557

MAGGIE SOTTERO®

COLORS

- All Ivory (pictured)

HIGHLIGHTS

- Ballantine crepe chiffon
- Strapless sweetheart neckline
- Lined with Zia stretch satin
- Covered buttons over zipper closure with inner elastic
- Thigh high slit

SIZES

0-28

personalize it!

PERSONALIZATION OPTIONS

- Extend the train for added drama (up to 8 in/20 cm), opt to shorten the train (up to 8 in/20 cm) or remove the train for a more casual look
- Add buttons down the back for a vintage vibe



Newton 22MW546

MAGGIE SOTTERO®



see the VIDEO!

personalize it!
FOR YOUR LOVE STORY



Newton 22MW546

MAGGIE SOTTERO®

COLORS

- All Ivory (pictured)

HIGHLIGHTS

- Ganavi stretch Mikado
- V-neckline
- Deep V-back
- Ganavi stretch Mikado spaghetti straps
- Lined with Brisa stretch jersey for comfort
- Zipper closure with covered buttons trailing down the train
- Covered buttons trail down to train
- Self tie bow

SIZES

0-28

personalize it!

PERSONALIZATION OPTIONS

- Opt to shorten the train (up to 35 in/89 cm) or remove the train for a more casual look



Orchid 22MC598

MAGGIE SOTTERO®

personalize it!
FOR YOUR LOVE STORY



MAGGIE SOTTERO
THIS GOWN IS MADE WITH LUXE
JERSEY LINING
Designed for a
comfortable fit that is
ultra-lightweight

Orchid 22MC598

MAGGIE SOTTERO®

COLORS

- All Ivory
- Ivory over Blush
- Ivory over Mocha (pictured)

HIGHLIGHTS

- Allover lace
- Modest V-neck
- Modest V-back
- Modest lace flutter sleeves with lined cap sleeve
- Lined with Virtue stretch jersey for comfort
- Zipper closure with covered buttons trailing down the train
- Illusion lace train

SIZES

0-28

personalize it!

PERSONALIZATION OPTIONS

- Extend the train for added drama (up to 8 in/20 cm), opt to shorten the train (up to 26 in/66 cm) or remove the train for a more casual look



Phaedra 22MW512

MAGGIE SOTTERO®

 see the VIDEO!

personalize it!
FOR YOUR LOVE STORY 



Phaedra 22MW512

MAGGIE SOTTERO®

COLORS

- All Diamond White (pictured)

HIGHLIGHTS

- Ballantine crepe chiffon
- Pleated bodice
- V-neckline
- Plunging V-back neckline with crisscross straps
- Ballantine crepe chiffon spaghetti straps
- Lined with Zia stretch satin
- Zipper closure
- Thigh high slit

SIZES

0-28

personalize it!

PERSONALIZATION OPTIONS

- Extend the train for added drama (up to 8 in/20 cm)



Primrose 22MK002

MAGGIE SOTTERO®



see the VIDEO!

personalize it!
FOR YOUR LOVE STORY



MAGGIE SOTTERO
THIS GOWN IS MADE WITH LUXE
JERSEY LINING
Designed for a
comfortable fit that is
ultra-lightweight



Primrose 22MK002

MAGGIE SOTTERO

COLORS

- All Ivory gown with Ivory Illusion
- Ivory gown with Natural Illusion (pictured)

HIGHLIGHTS

- Blanca stretch chiffon
- Illusion beaded lace bodice
- V-neckline with beaded trim
- Deep V-back
- Beaded spaghetti straps
- Lined in Virtue stretch jersey for comfort
- Zipper closure

SIZES

0-28

personalize it!

PERSONALIZATION OPTIONS

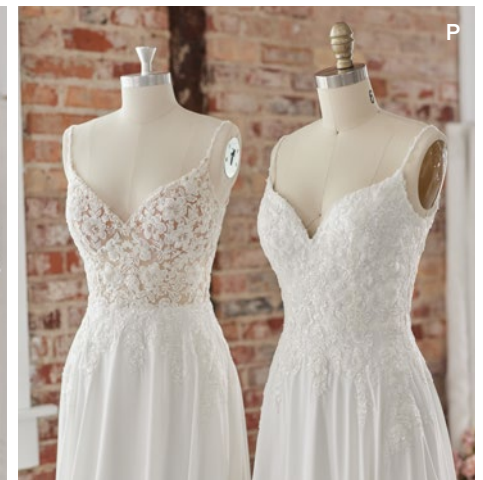
- Extend the train for added drama (up to 8 in/20 cm), opt to shorten the train (up to 8 in/20 cm) or remove the train for a more casual look
- Also available with a lined front bodice (22MK002B01)

ACCESSORIES

- Detachable flutter sleeves with beaded trim sold separately (DS022MK002000)

MISCELLANEOUS

- Photographed with light nude bra cups, dark nude available separately



Ralston 22MS500

MAGGIE SOTTERO®

personalize it!
FOR YOUR LOVE STORY



Ralston 22MS500

MAGGIE SOTTERO

COLORS

- All Ivory gown with Ivory Illusion
- Ivory over Soft Blush gown with Ivory Illusion (pictured)
- Ivory over Misty Mauve gown with Ivory Illusion
- Ivory over Nude gown with Ivory Illusion (pictured)

HIGHLIGHTS

- Sequined lace motifs over glitter texture tulle
- Deep illusion sweetheart neckline
- Covered buttons over zipper and inner powermesh corset closure
- Illusion scalloped train

SIZES

0–28

personalize it!

PERSONALIZATION OPTIONS

- Extend the train for added drama (up to 12 in/30 cm), opt to shorten the train (up to 11 in/27 cm) or remove the train for a more casual look
- Add buttons down the back for a vintage vibe
- Change texture tulle 1 to Chic organza

ACCESSORIES

- Detachable off-the-shoulder illusion lace cap-sleeves sold separately

MISCELLANEOUS

- Extra lace motif included for minor neckline alterations



Rousseau 22MS528

MAGGIE SOTTERO®



see the VIDEO!

personalize it!
FOR YOUR LOVE STORY



Rousseau 22MS528

MAGGIE SOTTERO®

COLORS

- All Ivory gown with Ivory Illusion (pictured)
- Ivory over Soft Blush gown with Natural Illusion (pictured)

HIGHLIGHTS

- Lace motifs accented with sequins over sparkle tulle
- Sheer organza lined bodice
- Soft sweetheart neckline
- Covered buttons over zipper closure

SIZES

0-28

personalize it!

PERSONALIZATION OPTIONS

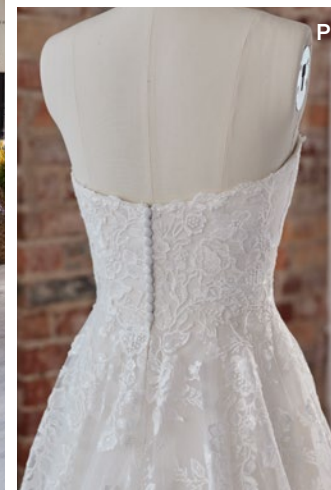
- Extend the train for added drama (up to 12 in/30 cm), opt to shorten the train (up to 32 in/81 cm) or remove the train for a more casual look
- Add buttons down the back for a vintage vibe
- Change sparkle tulle 1 to plain tulle
- Available with a fully lined bodice with a covered button over inner elastic closure (22MS528B01)

ACCESSORIES

- Detachable off-the-shoulder illusion lace cap sleeves sold separately (CS022MS528000)

MISCELLANEOUS

- Photographed with dark nude bra cups, available separately



Sahar 22MK565

MAGGIE SOTTERO®



see the
VIDEO!

personalize it!
FOR YOUR LOVE STORY



MAGGIE SOTTERO
THIS GOWN IS MADE WITH LUXE
JERSEY LINING
Designed for a
comfortable fit that is
ultra-lightweight



Sahar 22MK565

MAGGIE SOTTERO®

COLORS

- Ivory (pictured)

HIGHLIGHTS

- Sherwood crepe and pearl accented tulle
- Modest mock turtleneck
- Long sleeves with covered buttons at wrist
- Lined in Vlada stretch jersey for comfort
- Covered buttons over zipper closure

SIZES

0-28

personalize it!

PERSONALIZATION OPTIONS

- Opt to shorten the train (up to 15 in/38 cm) or remove the train for a more casual look
- Add buttons down the back for a vintage vibe



Sebastiane 22MC571

MAGGIE SOTTERO®



personalize it!
FOR YOUR LOVE STORY



MAGGIE SOTTERO
THIS GOWN IS MADE WITH LUXE
JERSEY LINING
Designed for a
comfortable fit that is
ultra-lightweight



Sebastiane 22MC571

MAGGIE SOTTERO

COLORS

- Ivory gown with Natural Illusion
- Ivory over Blush gown with Natural Illusion
- Ivory over Mocha gown with Natural Illusion (pictured)

HIGHLIGHTS

- Sequin lace motifs over texture tulle
- Illusion bodice with soft basque waist accented with sequin lace motifs
- V-neckline
- Illusion V-back
- Lace spaghetti straps
- Lined with Virtue stretch jersey for comfort
- Covered buttons over zipper closure
- Illusion lace petal train with scallop lace hem

SIZES

0-28

personalize it!

PERSONALIZATION OPTIONS

- Extend the train for added drama (up to 6 in/ 15cm), opt to shorten the train (up to 8 in/20 cm) or remove the train for a more casual look
- Add buttons down the back for a vintage vibe
- Change texture tulle to sparkle tulle 1
- Available with a lined front bodice (22MC571B01)



Symphony 22MT535

MAGGIE SOTTERO®



see the VIDEO!

personalize it!
FOR YOUR LOVE STORY



Symphony 22MT535

MAGGIE SOTTERO®

COLORS

- All Ivory gown with Ivory Illusion (pictured)
- Ivory over Pearl gown with Natural Illusion (pictured)
- Ivory over Misty Mauve gown with Natural Illusion

HIGHLIGHTS

- Sparkle and sequin tulle
- Scoop neckline
- Square back
- Tank straps
- Covered buttons over zipper closure
- Pockets

SIZES

0-28

personalize it!

PERSONALIZATION OPTIONS

- Extend the train for added drama (up to 25 in/63 cm), opt to shorten the train (up to 34 in/88 cm) or remove the train for a more casual look
- Add buttons down the back for a vintage vibe

ACCESSORIES

- Detachable beaded belt sold separately (BB022MT535000)



Tamirys 22MS552

MAGGIE SOTTERO®

personalize it!
FOR YOUR LOVE STORY



Tamirys 22MS552

MAGGIE SOTTERO®

COLORS

- Ivory/Silver Accent gown with Ivory Illusion (pictured)
- Ivory/Silver Accent over Misty Mauve gown with Natural Illusion (pictured)
- Ivory/Silver Accent over Blush gown with Natural Illusion

HIGHLIGHTS

- Lace motifs over sparkle tulle and patterned glitter tulle
- Sheer organza lined lace bodice with sequins
- Deep V-neckline
- Deep illusion lace V-back
- Illusion lace tank straps
- Covered buttons over zipper closure
- Illusion side panels

SIZES

0–28

personalize it!

PERSONALIZATION OPTIONS

- Extend the train for added drama (up to 12 in/30 cm), opt to shorten the train (up to 22 in/55 cm) or remove the train for a more casual look
- Add buttons down the back for a vintage vibe
- Change patterned glitter tulle to plain tulle
- Change sparkle tulle and patterned glitter tulle to plain tulle
- Available with a lined sweetheart bodice (22MS552B01)

ACCESSORIES

- Detachable long illusion lace sleeves sold separately (DS022MS552000)

MISCELLANEOUS

- Photographed with light nude bra cups, dark nude available separately



Tenley 22MW530

MAGGIE SOTTERO®

personalize it!
FOR YOUR LOVE STORY



Tenley 22MW530

MAGGIE SOTTERO®

COLORS

- All Ivory (pictured)

HIGHLIGHTS

- Lux stretch crepe
- Ruched bodice
- Off-the-shoulder portrait neckline
- Ruched scoop back neckline
- Ruched off-the-shoulder sleeve
- Covered buttons over zipper closure

SIZES

0-18

personalize it!

PERSONALIZATION OPTIONS

- Extend the train for added drama (up to 5 in/13 cm), opt to shorten the train (up to 8 in/20 cm)



Valetta 22MW544

MAGGIE SOTTERO®



personalize it!
FOR YOUR LOVE STORY



MAGGIE SOTTERO
THIS GOWN IS MADE WITH LUXE
JERSEY LINING
Designed for a comfortable fit that is ultra-lightweight



Valetta 22MW544

MAGGIE SOTTERO®

COLORS

- Ivory
- Ivory over Soft Pearl (pictured)

HIGHLIGHTS

- 3D lace motifs over soft tulle
- Sweetheart neckline
- V-back neckline
- Lined with Virtue Stretch jersey for comfort
- Covered buttons over zipper closure

SIZES

0-28

personalize it!

PERSONALIZATION OPTIONS

- Extend the train for added drama (up to 8 in/20 cm), opt to shorten the train (up to 8 in/20 cm) or remove the train for a more casual look
- Add buttons down the back for a vintage vibe

ACCESSORIES

- Off-the-shoulder tulle cap sleeves with 3D lace motifs sold separately (CS022MW544000)
- Long bishop sleeve armbands with 3D lace motifs (DS022MW544000)
- Two tier floor length veil with scattered lace motifs sold separately *Veil measures 80 inches (203 cm) (VL022MW544000)



Winter 22MT585

MAGGIE SOTTERO®



see the VIDEO!

personalize it!
FOR YOUR LOVE STORY



MAGGIE SOTTERO
THIS GOWN IS MADE WITH LUXE
JERSEY LINING
Designed for a comfortable fit that is ultra-lightweight



COLORS

- Ivory gown with Natural Illusion
- Ivory over Soft Pearl gown with Natural Illusion
- Ivory over Blush gown with Natural Illusion (pictured)
- Ivory over Misty Mauve gown with Natural Illusion

HIGHLIGHTS

- All over lace
- Sheer organza lined lace bodice with front illusion cutout over the bust
- Deep illusion
- V-neckline
- Scoop back neckline
- Tulle spaghetti straps
- Lined with Lorena stretch jersey for comfort
- Covered buttons over zipper closure

SIZES

0-28

personalize it!

PERSONALIZATION OPTIONS

- Extend the train for added drama (up to 8 in/20 cm), opt to shorten the train (up to 18 in/46 cm) or remove the train for a more casual look
- Add buttons down the back for a vintage vibe
- Also available with a lined front bodice (22MT585B01)

ACCESSORIES

- Detachable long illusion lace sleeve sold separately (DS022MT585000)

MISCELLANEOUS

- Extra lace motif included for minor neckline alterations
- Photographed with light nude bra cups, dark nude available separately



Yates 22MC570

MAGGIE SOTTERO®



see the
VIDEO!

personalize it!
FOR YOUR LOVE STORY

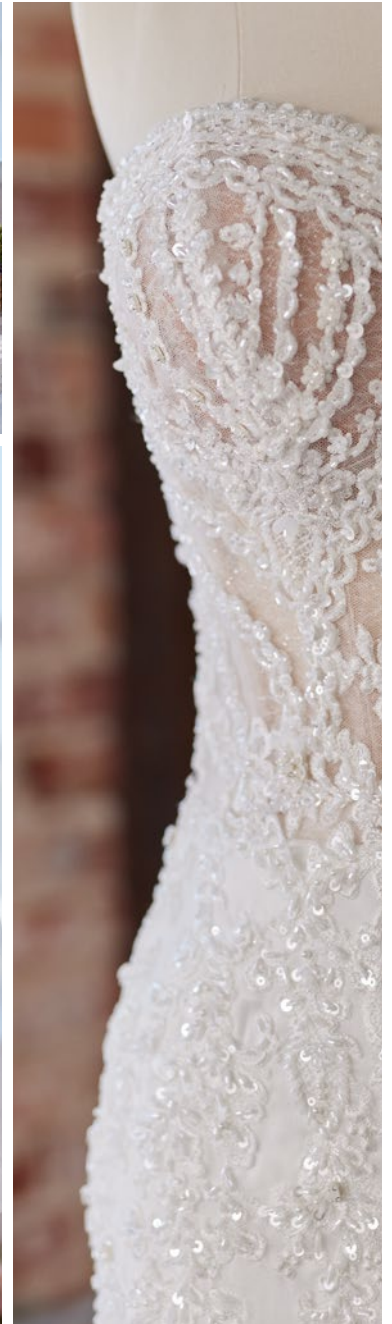


MAGGIE SOTTERO
THIS GOWN IS MADE WITH LUXE
JERSEY LINING
Designed for a
comfortable fit that is
ultra-lightweight

A



A



Yates 22MC570

MAGGIE SOTTERO®

COLORS

- Ivory gown with Natural Illusion (pictured)

HIGHLIGHTS

- Opulent stretch satin
- Sheer organza lined bodice with beaded embroidery and glitter texture tulle
- Sweetheart neckline
- Lined with Virtue stretch jersey for comfort
- Zipper closure with covered buttons trailing down the train
- Illusion cut-out lace train with sequins

SIZES

0-28

personalize it!

PERSONALIZATION OPTIONS

- Extend the train for added drama (up to 8 in/20 cm), opt to shorten the train (up to 16 in/40 cm) or remove the train for a more casual look
- Available with a fully lined bodice (22MC570B01)

ACCESSORIES

- Detachable beaded lace jacket with scallop keyhole opening and long tulle bishop sleeves with lace cuff finished with covered buttons sold separately (JK022MC570000)

MISCELLANEOUS

- Photographed with light nude bra cups, dark nude available separately



Zyrandra 22MT596

MAGGIE SOTTERO®

personalize it!
FOR YOUR LOVE STORY



Zyranda 22MT596

MAGGIE SOTTERO®

COLORS

- All Ivory gown with Ivory Illusion
- Ivory over Blush gown with Natural Illusion (pictured)

HIGHLIGHTS

- Lace motifs over Chantilly lace
- Lined with Roma satin
- Lined lace bodice with front illusion cutout over the bust
- Covered buttons over zipper closure
- Scoop neckline
- Illusion tulle side insets
- Illusion lace tank straps
- Pockets

SIZES

0-28

personalize it!

PERSONALIZATION OPTIONS

- Extend the train for added drama (up to 20 in/61 cm), opt to shorten the train (up to 10 in/25 cm)
- Add buttons down the back for a vintage vibe
- Available with a fully lined bodice (22MT596B01)



SISTER STYLES AND NEW PERSONALIZATION OPTIONS

MAGGIE SOTTERO



Aidan Lynette 9MW858B01

Raised front neckline



Alaina 8MC734B01

Lined front bodice
(new personalization available)



Anissa 20MW707A11

Long sleeves
(new personalization available)



Fatima 20MW328A11

Long sleeves
(new personalization available)



Fatima Lynette 20MW328B01

High neckline



Fatima Lynette 20MW328B11

High neckline & Long sleeves
(new personalization available)





Fernanda 20MW332

Long sleeves
(new personalization available)



Fernanda Lynette 20MW332A11

High neckline



Fernanda Lynette 20MW332B11

High neckline & Long sleeves
(new personalization available)



Savannah 20MC274B01

Lined front bodice
(new personalization available)



Selena 20MT727B01

Strapless
(new personalization available)

Additional Styles

Tuscany 8MS794A05

LAYER REPLACEMENT - Chantilly lace 2 to Sparkle Tulle 1 (new personalization available)

Tuscany Lane 20MS310A05

LAYER REPLACEMENT - Chantilly lace 2 to Sparkle Tulle 1 (new personalization available)

Tuscany Lynette 8MS794B05

LAYER REPLACEMENT - Chantilly lace 2 to Sparkle Tulle 1 (new personalization available)
(new personalization available)

Tuscany Marie 8MS794C05

LAYER REPLACEMENT - Chantilly lace 2 to Sparkle Tulle 1 (new personalization available)

Tuscany Royale 21MS347A05

LAYER REPLACEMENT - Chantilly lace 2 to Sparkle Tulle 1 (new personalization available)